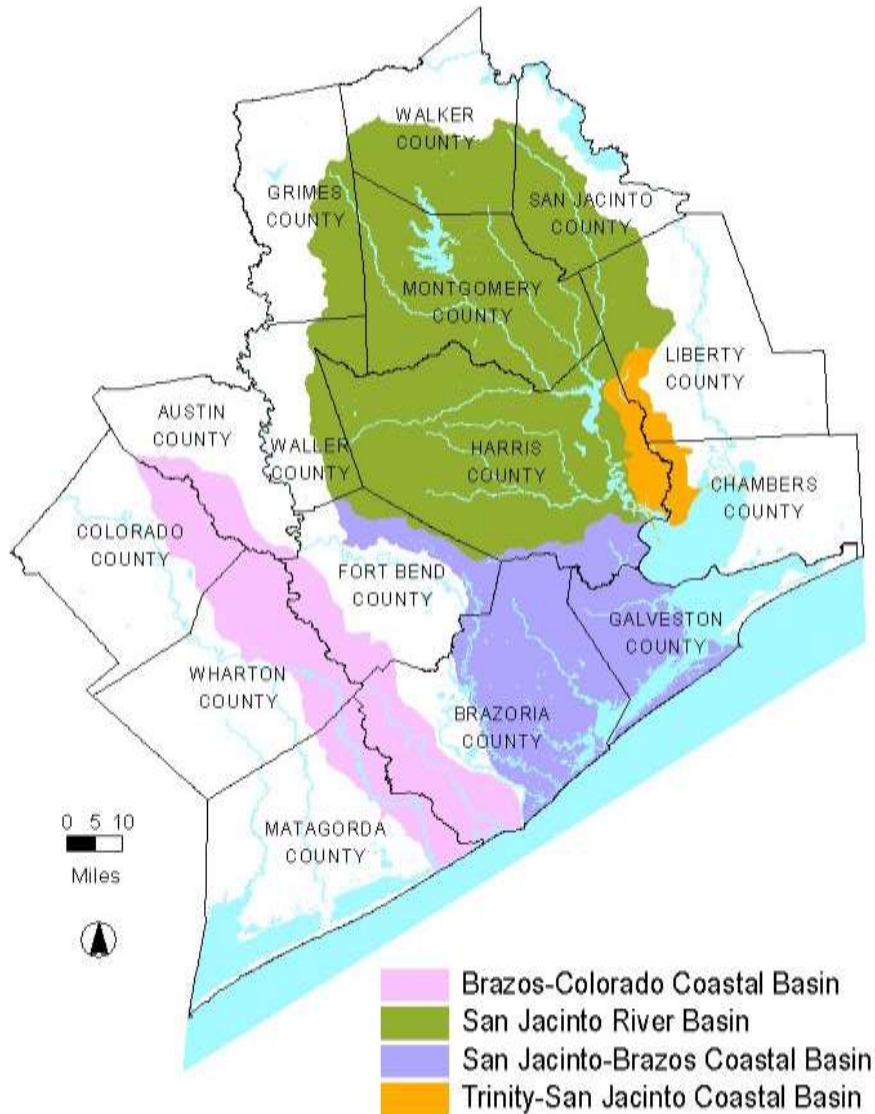




Status of Our Bayous

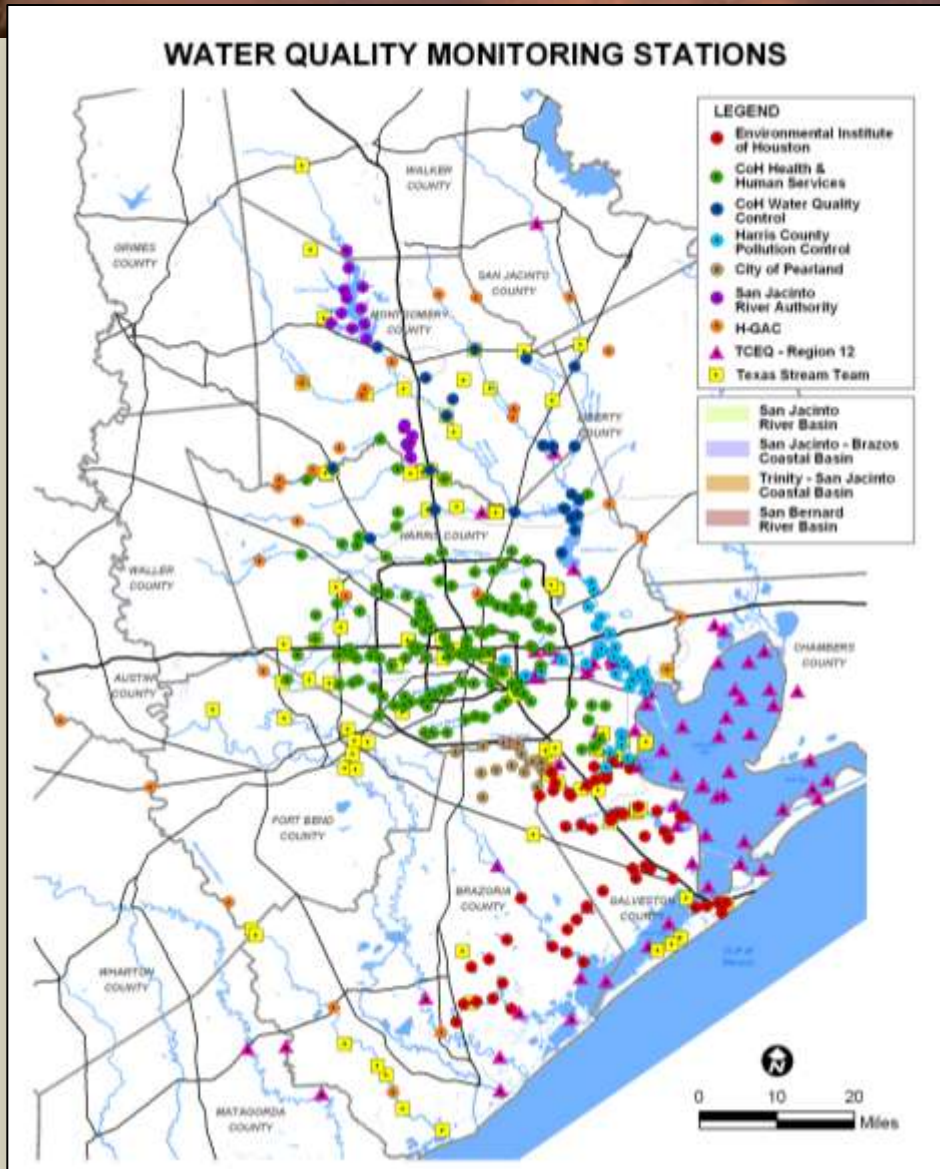
Clean Rivers Program 5-Year Report

H-GAC's Clean Rivers Program



- Four basins
- 16,000 miles of streams and shoreline
- Population of over 5 million

Regional Coordinated Monitoring



Professional Monitoring

- 8 local partners + TCEQ + USGS
- Over 370 Sites
- All data under approved QAPP

Stream Team Monitoring

- 52 Volunteers
- 45 Sites

Making the Data Count

- Eliminated duplication
- All local data is comparable
- Data used by TCEQ for WQ assessments

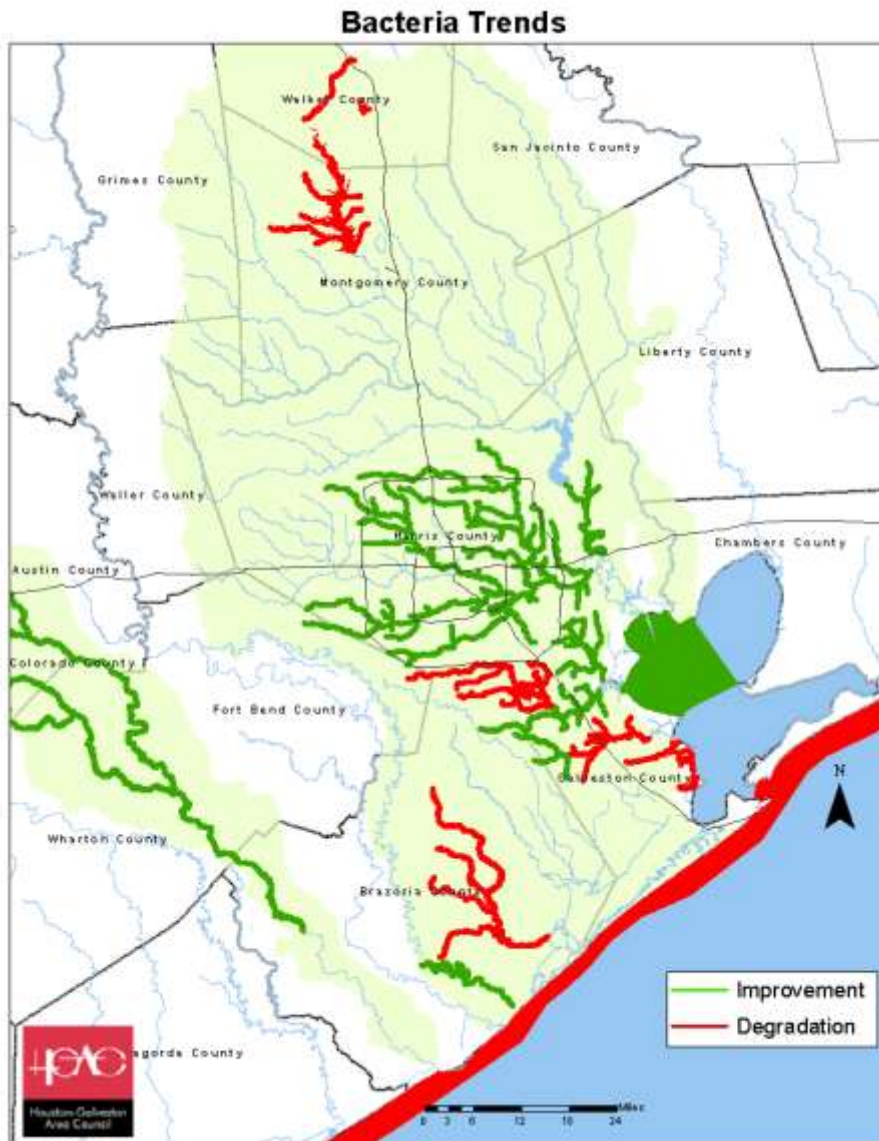


Bacteria Impairments in the H-GAC Area

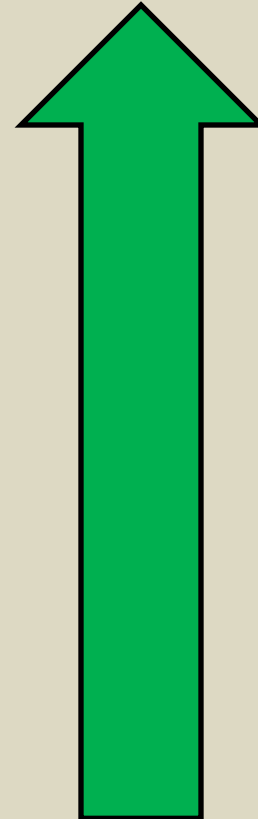


63%
of stream segments in
the H-GAC area are
impaired by bacteria.

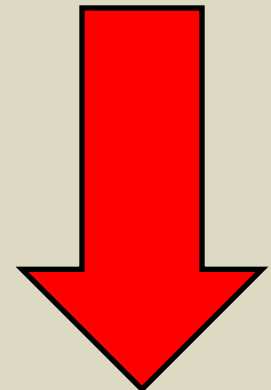
Bacteria Trends in the H-GAC Area



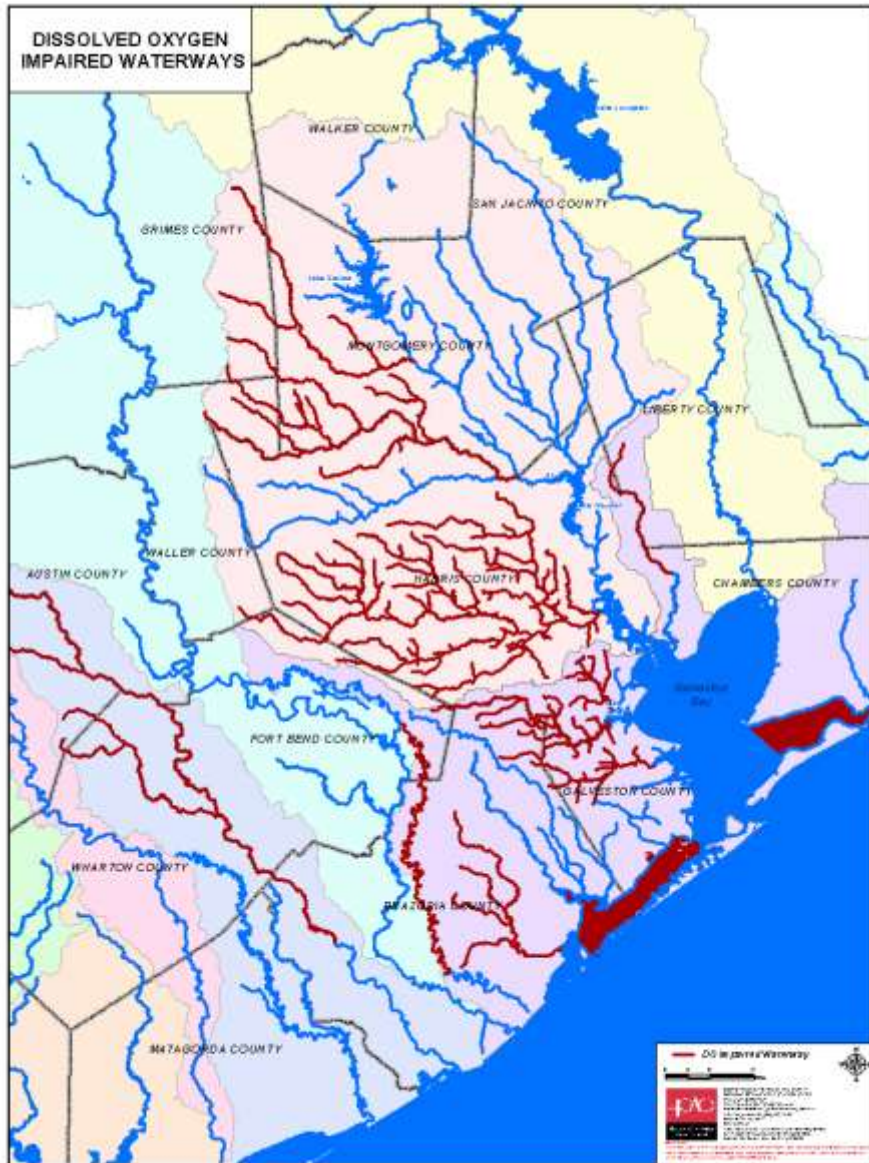
21%



12%



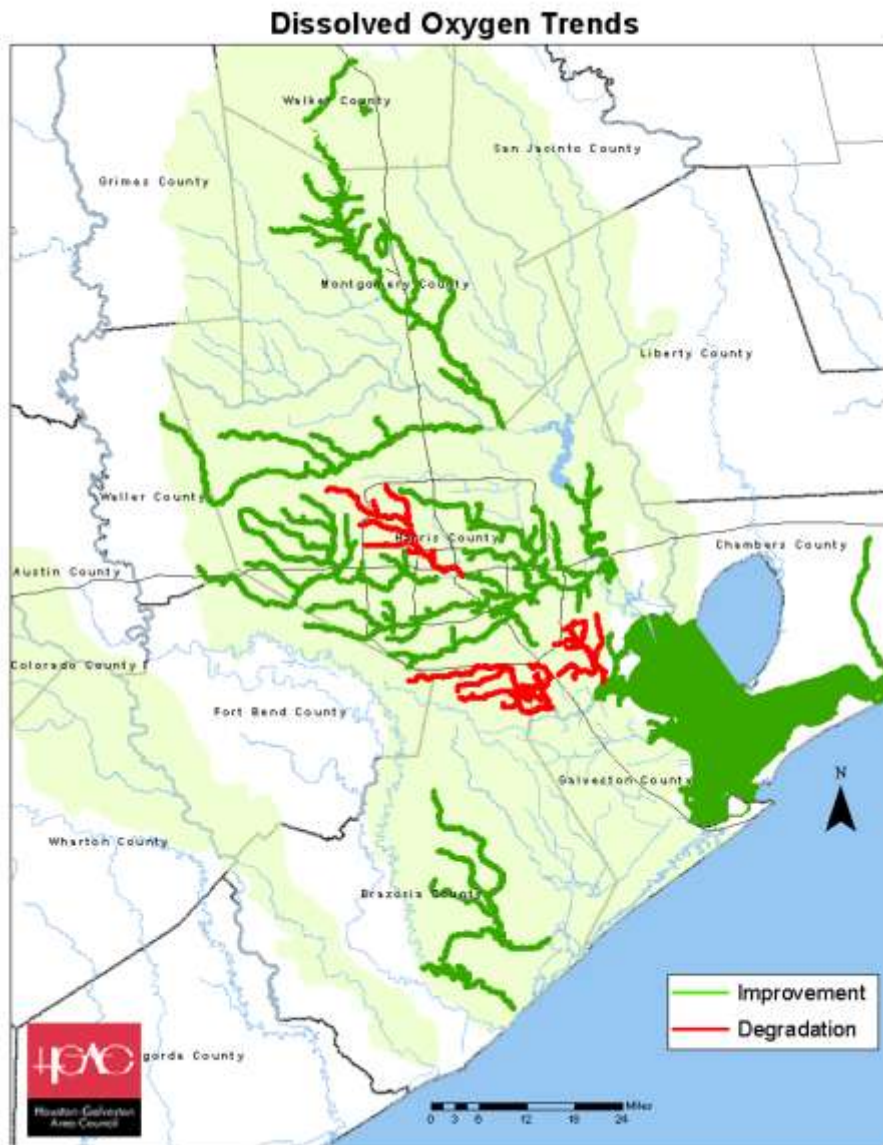
DO Impairments in the H-GAC Area



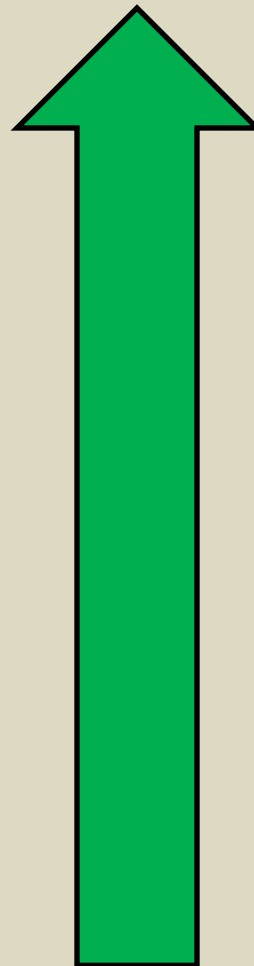
31%

of stream segments in the H-GAC area are impaired or have a concern regarding Dissolved Oxygen (DO).

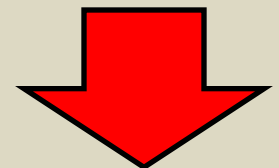
DO Trends in the H-GAC Area



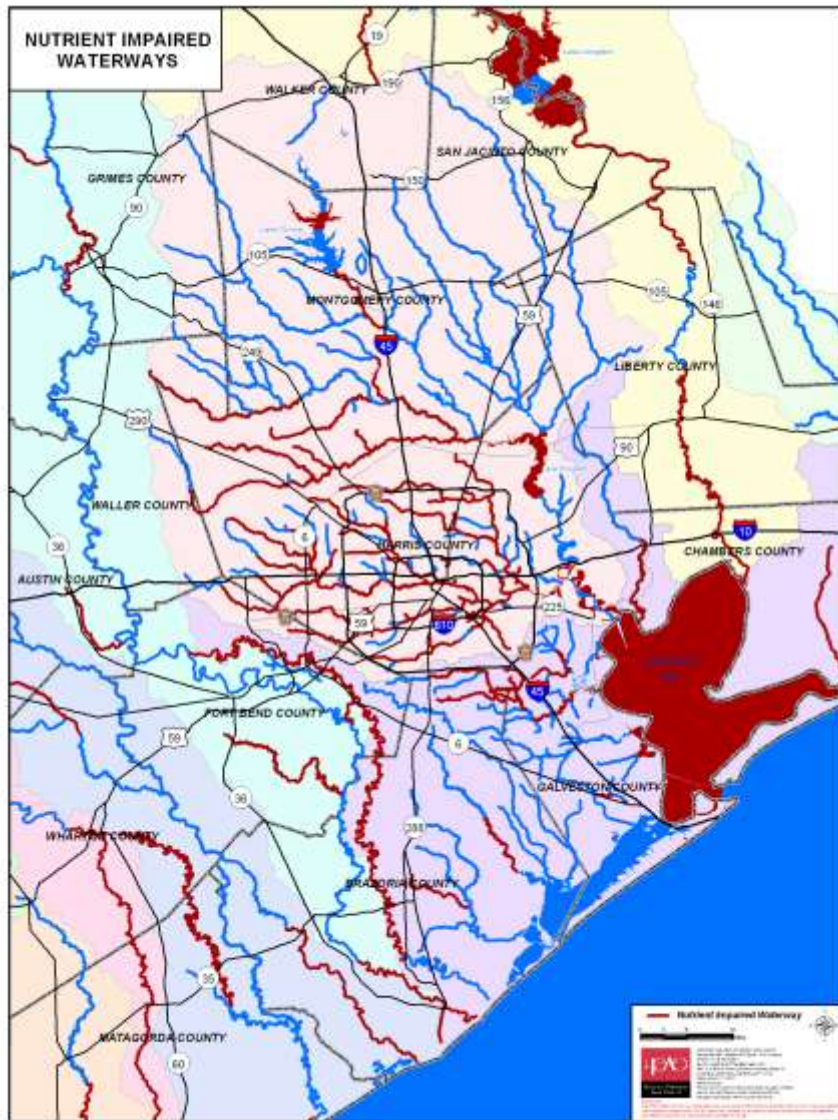
27%



5%



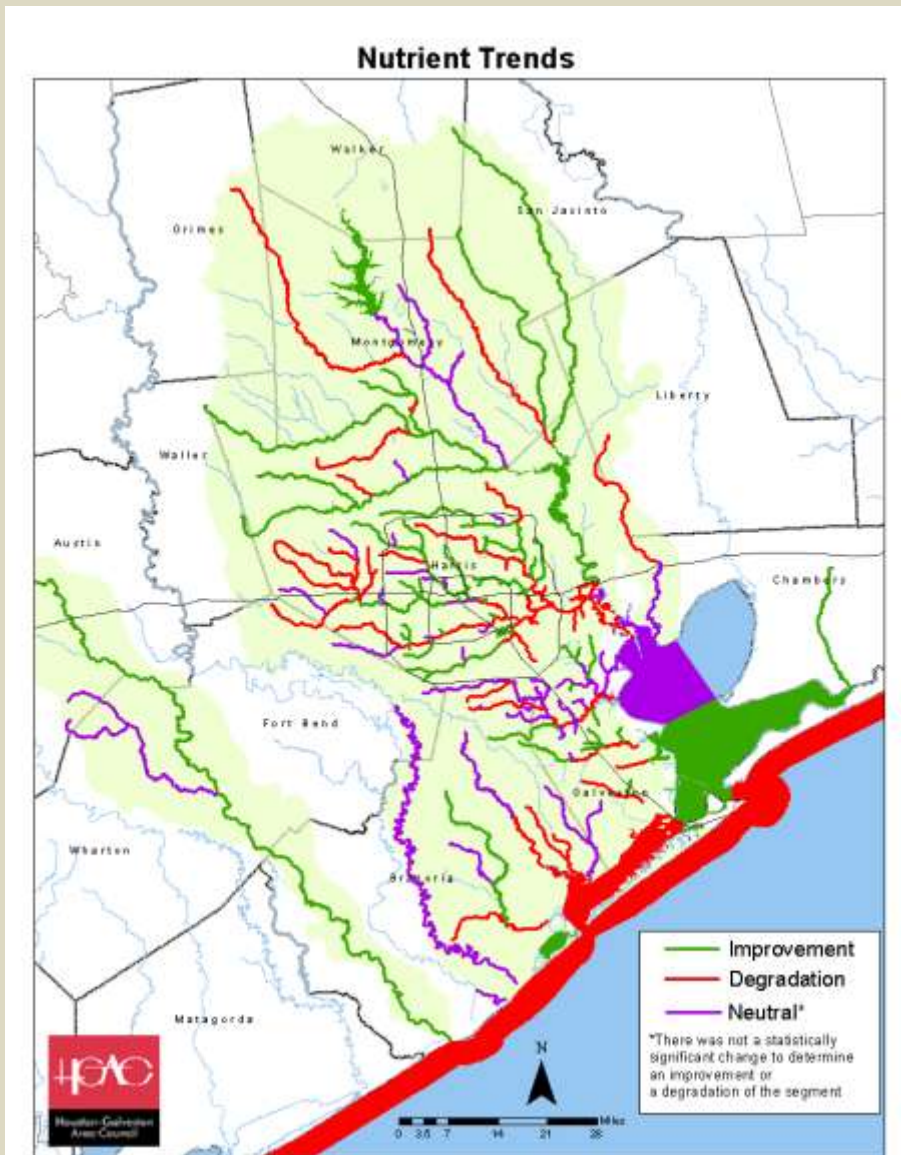
Nutrient Concerns in the H-GAC Area



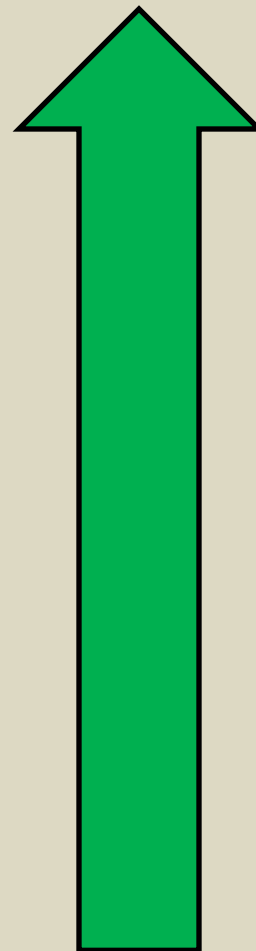
42%

of stream segments in the H-GAC area have a nutrient concern.

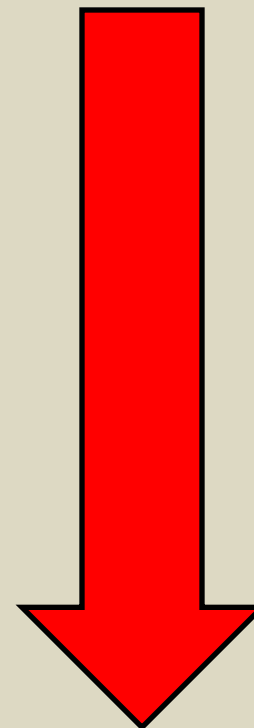
Nutrient Trends in the H-GAC Area



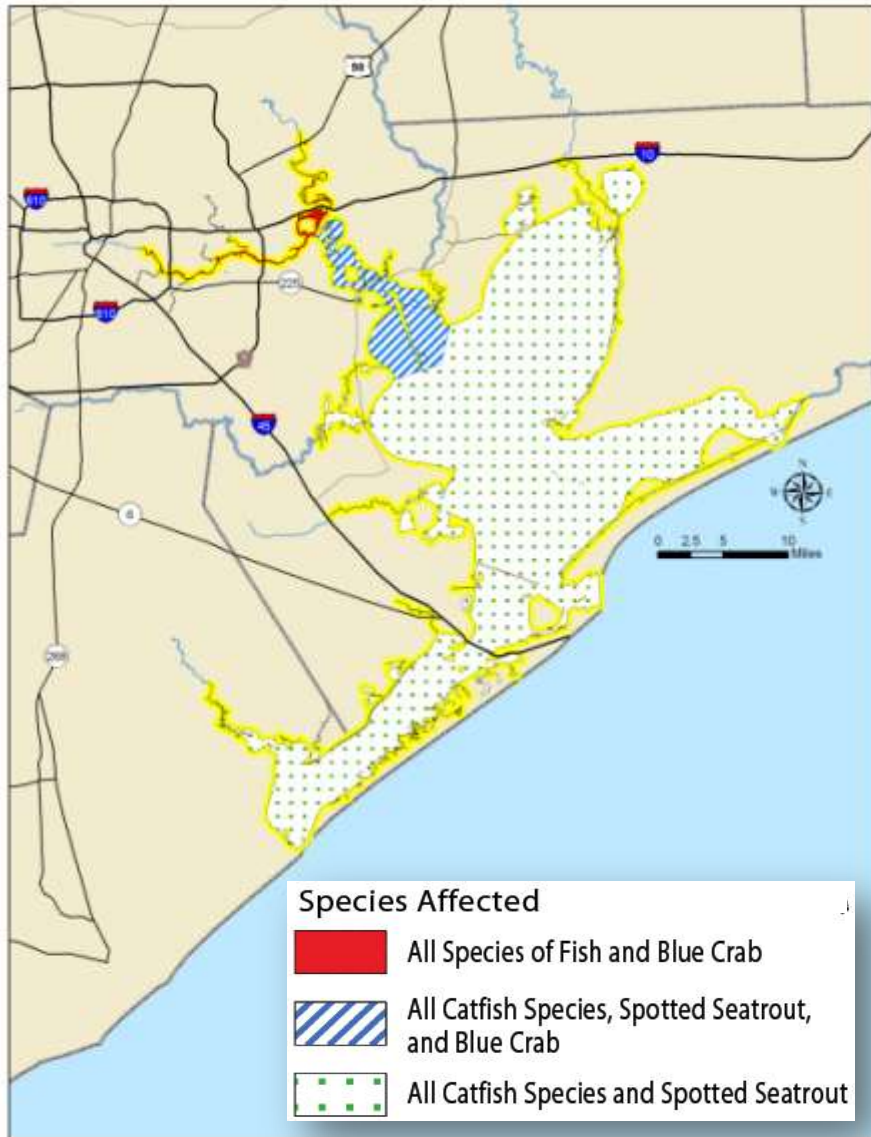
36%



26%



PCB/Dioxin Impairments in the H-GAC Area



21%

of tidal or bay segments
in the H-GAC area are
impaired by PCB/Dioxin.



Houston-Galveston
Area Council

[CONTACT US](#)

BASIN SUMMARY REPORT 2011

[Executive Summary](#)

[Introduction](#)

[Public Involvement & Outreach](#)

[Basin Overview](#)

[Terminology](#)

[Clean Rivers Program
Special Projects](#)

[Watershed Protection Plans](#)

[H-GAC Water Quality Programs](#)

[Water Quality Review](#)

[Data Review Methodology](#)

[Watershed Summaries](#)

[Recommendations & Conclusions](#)

[Committees](#)

[Staff Contacts](#)

[Appendix](#)

How's The Water?



SEARCH

Making the Data Count

Water Quality Summary

Ranking Key

☹ Severe, multiple water quality impairments and/or concerns exist in the majority of the water body.

☹☹ Significant, multiple water quality impairments and/or concerns exist in a majority of the water body.

☹☹☹ Impairments or concerns exist in a substantial portion of the water body.

☹☹☹☹ Impairment or concern exists in the water body.

☹☹☹☹☹ No known water quality impairments or concerns exist in the water body.

The numbers represent the percent of total segment length that is impaired or of concern for each parameter. Cells without numbers represent stream segments that are currently meeting state standards but may be improving or degrading for each parameter.

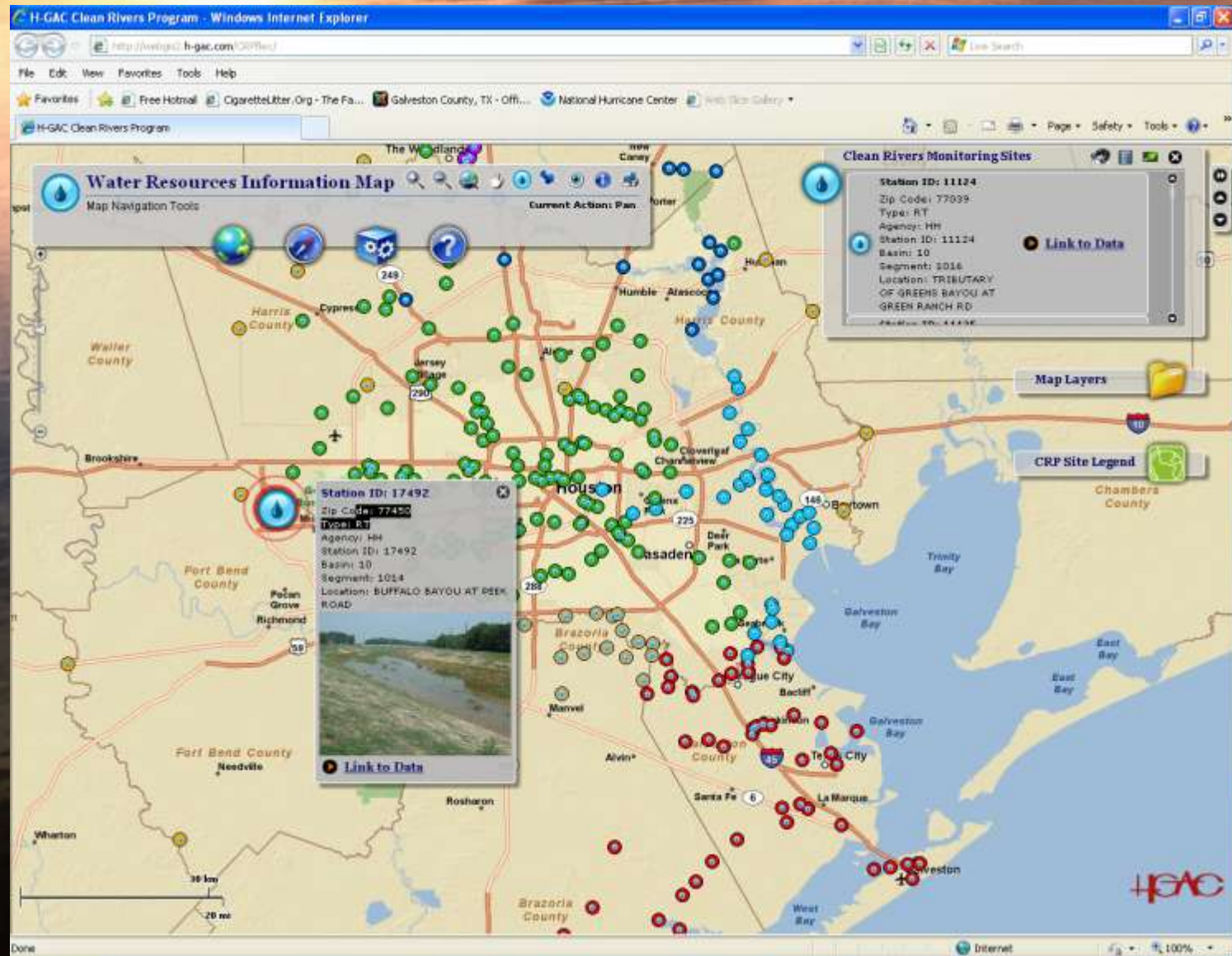
Improving

Degrading

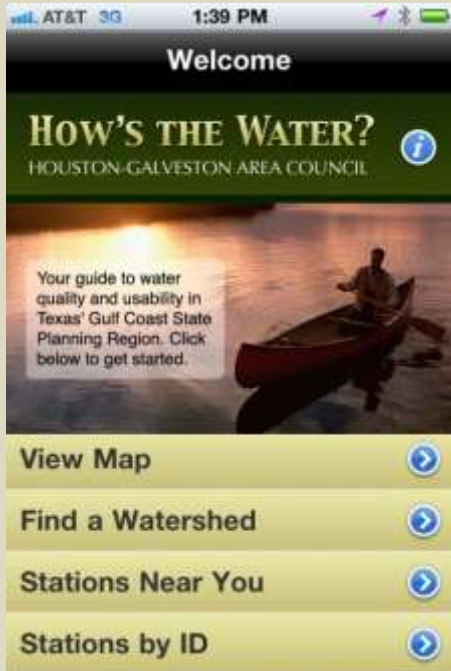
* Other includes parameters such as metals in water, metals in sediment, impaired habitat, impaired benthic macro invertebrates, impaired fish communities, sediment toxicity, fecal coliform, mercury in fish tissue and fish contamination. For more information see watershed summaries.

Basin & Segment Name	Segment number	DO	Bacteria	Chlorophyll	Nutrients	Dioxin/PCBs	Other*	Frog(s)
Trinity - San Jacinto Coastal Basin								
Cedar Bayou Above Tidal	902	100						☹☹☹
Cedar Bayou Tidal	901		100	100		100		☹
San Jacinto River Basin								
Buffalo Bayou Above Tidal	1014	2	77		66		2	☹☹☹
Buffalo Bayou Tidal	1013	31	63		36		27	☹☹☹
Caney Creek	1010		50					☹☹☹
Cypress Creek	1009		85		85		13	☹☹☹
East Fork San Jacinto River	1003		100					☹☹☹
Greens Bayou Above Tidal	1016	5	96		85			☹☹
Houston Ship Channel	1006	2	71		64	37	37	☹☹
Houston Ship Channel / San Jacinto River and Select Bay Segments	1005				60	100		☹☹
Houston Ship Channel Buffalo Bayou Tidal	1007	14	99		87	24	24	☹☹
Lake Conroe	1012			16				☹☹☹☹
Lake Creek	1015	37						☹☹☹☹
Lake Houston	1002		9	13	22		1	☹☹☹☹
Peach Creek	1011		100					☹☹☹
San Jacinto River Tidal	1001					43		☹☹☹
Spring Creek	1008	12	47	1	31		23	☹☹☹
West Fork San Jacinto River	1004		64		27			☹☹☹
White Oak Bayou	1017	4	79		76			☹☹
San Jacinto - Brazos Coastal Basin								
Armand Bayou Tidal	1113	62	36	12	18	25		☹☹☹
Bastrop Bayou Tidal	1105	79	35					☹☹☹
Chocolate Bayou Above Tidal	1108						100	☹☹☹☹
Chocolate Bayou Tidal	1107		100	100		100		☹
Clear Creek Above Tidal	1102	65	64		68	44	12	☹☹
Clear Creek Tidal	1101	43	94	10	24	29		☹☹
Dickinson Bayou Above Tidal	1104	57	41					☹☹

Water Resources Information Map (WRIM)



i Phone App





Questions?



Todd Running
Water Resources Program Manager
todd.running@h-gac.com
h-gac.com/crp